

Apartment Treatment Programs

1931 Buffalo Road, Rochester, NY 14624 | (585) 426-8000 *main line* | (585) 247-2257 *fax*

Apartment Treatment Programs are certified by the New York State Office of Mental Health and provide consumers with the highest level of independence in a certified program. The program is intended to be the last residential step before the consumer begins to live independently within the community. An emphasis is placed on increasing personal initiative and self-reliance. Staff make routine visits daily and are available 24-hours a day. Apartments are located in Monroe County and accommodate one to two people.

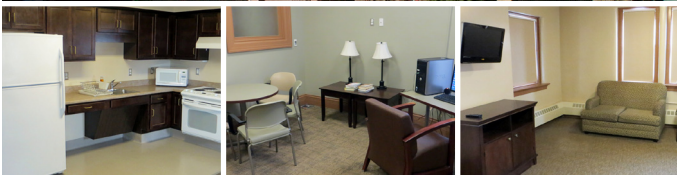
Carriage Factory

33 Litchfield St, Rochester, NY 14608



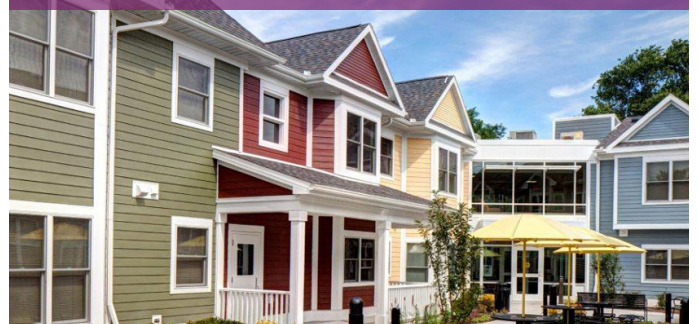
West Main

750 West Main St, Rochester, NY 14611



Neighborhood of the Arts

21 Elton St, Rochester, NY 14607



Ridgeview Commons

109 Marburger St, Rochester, NY 14621



Rochester View Apartments

4365 West Henrietta Rd, Henrietta, NY 14467



Who can make a referral to a DePaul residential mental health program?

DePaul is part of community-wide mental health treatment and rehabilitation system in the counties in which we have a presence. Individuals must be actively involved in treatment to be considered for residency in a DePaul residential mental health program. Referrals are typically made by a treatment professional including psychiatrists, therapists, or social workers from a hospital-based inpatient mental health facility or outpatient program but families and potential residents can also begin the referral process.

Do families and clients participate in the referral process?

Families and clients are encouraged to be active participants in making this important decision. Both are encouraged to learn more about DePaul's services, program expectations, and sites to see how each best match the interests of the client prior to a formal referral. DePaul may be recommended by a community service provider, however the client needs to make the commitment to entering and engaging in the program. It's therefore vital that the client visit the program and meet with staff members and other clients so they may make an informed decision.

How do you pay for residential mental health services?

At DePaul, residential mental health services are paid by government funding through client fees from County Department of Social Services, Social Security, and for some programs, Medicaid. Employed clients pay a fee based on their monthly income. Families who have assumed financial responsibility for their relative receiving services pay a fee based on their individual circumstances.

Referrals are made through Monroe County Single Point of Access (SPOA).

The application is available at <https://www2.monroecounty.gov/mh-adult-spoa-referrals>

If you know of someone who would benefit from placement and have further questions about our services, please contact Yvonne Adams, Intake Director, at yadams@depaul.org